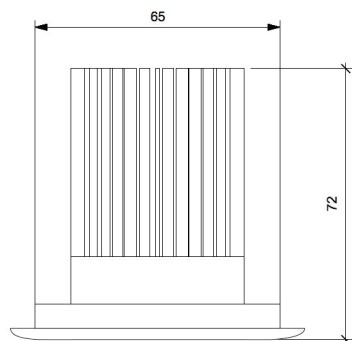
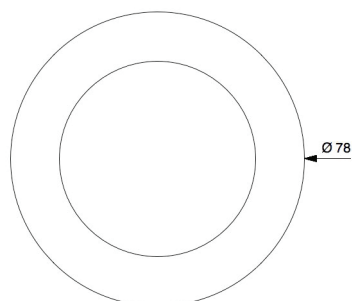
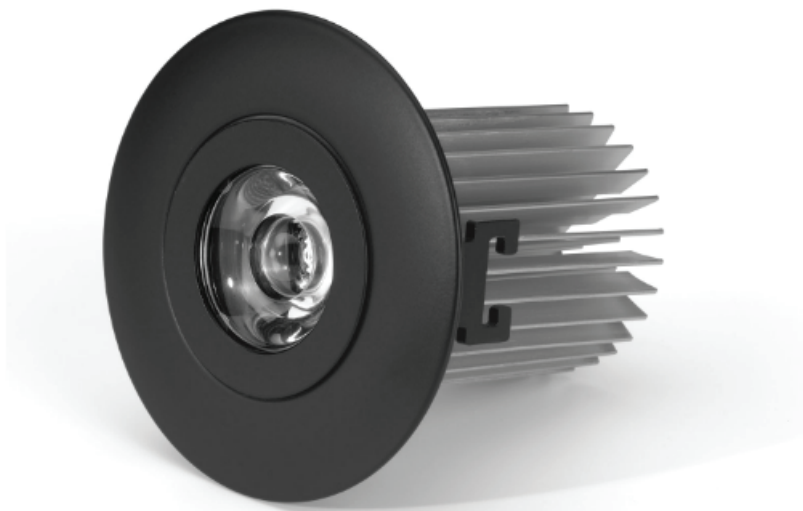


DEIMOS 50

Deimos 50 is a recessed lighting fixture to replace traditional lamps MR16. This product is extremely versatile: according to the optic we select - available from 5° to 120° - it lights evenly an environment or emphasizes specific details.



Mechanical features

Body: anodized or painted
 Color: any color and coating
 Cooling: natural convection
 Front: PMMA
 Dimensions: Ø 78x72 mm
 Weight: 0,21 kg
 IP grade: IP 20 or IP 67
 Recessed hole: Ø 66 mm

Electrical features

Vac: 220 50/60 Hz
 Power: 12 W
 Consumption: 13 W

Lighting features

Luminous source: high power LED
 Color temperature: from 2700°K to 6000°K
 Luminous flux: 1550 lm (4000°K)
 CRI: from 70 to 97
 Optics: 6° - 10° - 23° - 35° - 45°
 Variants: RGBW, vary white

