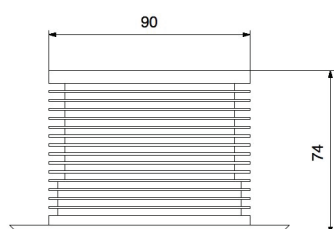
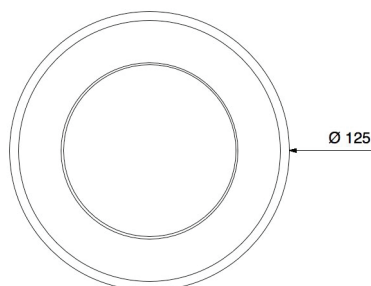
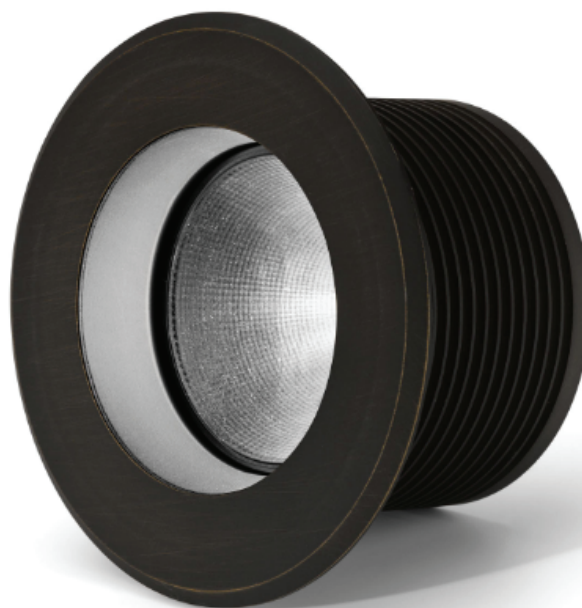


Atria 111 is a recessed lighting fixture to apply to ceilings or walls, which light source is placed very backwards from the edge in order to reduce the dazzling. The fastening is mechanic so that you can change the external ring without extracting the whole fixture; such external structure is thin and can be customized with every color and treatment.



# ATRIA 111



## Mechanical features

Body: anodized or painted  
 Color: any color and coating  
 Cooling: natural convection  
 Front: PMMA  
 Dimensions: Ø 125X74 mm  
 Weight: 0,42 kg  
 IP grade: IP 20  
 Recessed hole: Ø 91 mm

## Electrical features

Vac: 220 V 50/60 Hz  
 Power: 24 W  
 Consumption: 27 W

## Lighting features

Luminous source: COB LED  
 Color temperature: from 2200°K to 6000°K  
 Luminous flux: 2650 lm (2850°K)  
 CRI: from 70 to 98  
 Optics: 12° - 22° - 38° - 70°  
 Variants: RGBW, vary white

