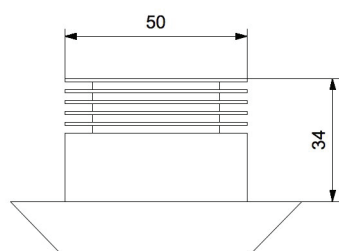
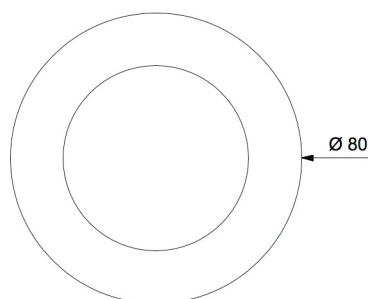


# ATRIA 50

## B

Atria 50 is a recessed lighting fixture to apply to ceilings or walls, characterized by a mechanical fastening. This feature allows to change the external ring without extracting the whole fixture; such external structure is semi-conical and can be customized with every color and treatment.



### Mechanical features

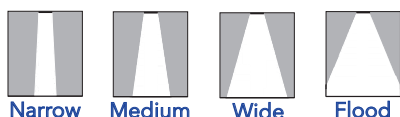
Body: anodized or painted  
 Color: any color and coating  
 Cooling: natural convection  
 Front: PMMA  
 Dimensions: Ø 80x34 mm  
 Weight: 0,14 kg  
 IP grade: IP 20 or IP 67  
 Recessed hole: Ø 51 mm

### Electrical features

Vac: 220 V 50/60 Hz  
 Power: 12 W  
 Consumption: 14 W

### Lighting features

Lighting source: high power LED  
 Color temperature: from 2700°K to 6000°K  
 Luminous flux: 1250 lm (3000°K)  
 CRI: from 70 to 98  
 Optics: 13° - 28° - 45° - 70°  
 Variants: RGBW, vary white



Narrow

Medium

Wide

Flood