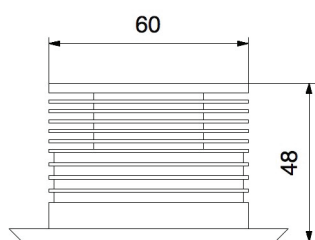
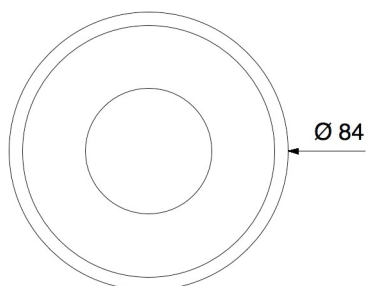
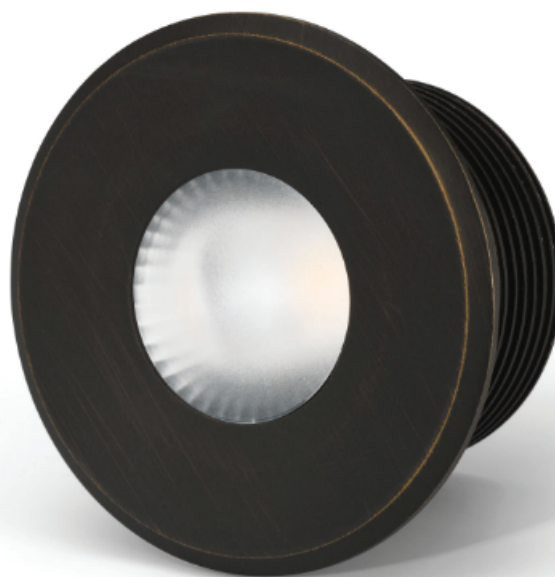


ATRIA 50

Atria 50 is a recessed lighting fixture to apply to ceilings or walls, characterized by a mechanical fastening. This feature allows to change the external ferrule without extracting the whole fixture; such external structure is thin and can be customized with every color and treatment.



Mechanical features

Body: anodized or painted

Color: any color and coating

Cooling: natural convection

Front: PMMA

Dimensions: Ø 84x48 mm

Weight: 0,15 kg

IP grade: IP 20 or IP 67

Recessed hole: Ø 61 mm

Electrical features

Vac: 220 V 50/60 Hz

Power: 12 W

Consumption: 14 W

Lighting features

Lighting source: power LED

Color temperature: from 2700°K to 6000°K

Luminous flux: 1250 lm (3000°K)

CRI: from 70 to 98

Optics: 13° - 28° - 45° - 70°

Variants: RGBW, vary white

